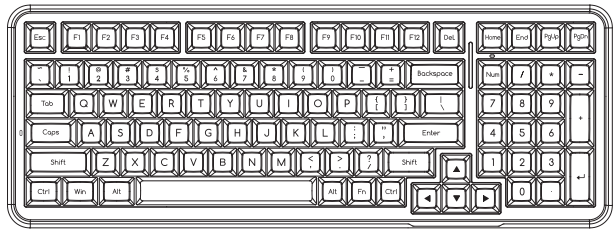
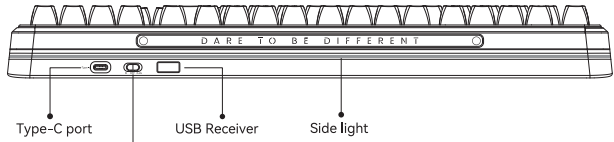


## MCHOSE

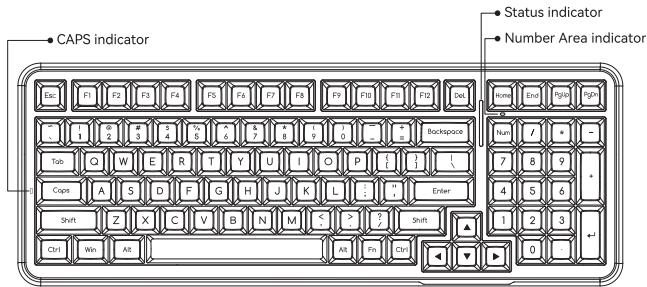


### — K99 User Manual — MECHANICAL KEYBOARD

Tip: Please fully charge the keyboard before using it.



- Mode switch:
1. The left position **[B]** indicates wireless mode.
  2. The middle position **[OFF]** indicates wired mode.
  3. The right position **[2.4G]** indicates 2.4G mode.

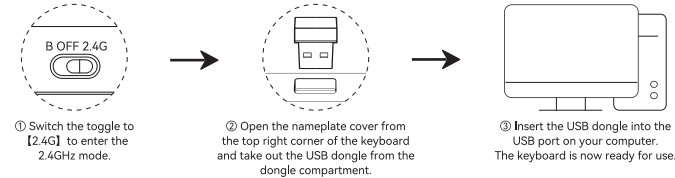


Keyboard turning off: Switch the toggle to **[OFF]** mode and unplug the cable to disconnect.

Keyboard polling rate: 1000Hz in wired mode, 1000Hz in 2.4GHz mode, 125Hz in wireless mode.

Attention: The images in this manual are **all** schematic diagrams and may deviate from the actual product. Please refer to the actual product for accuracy.

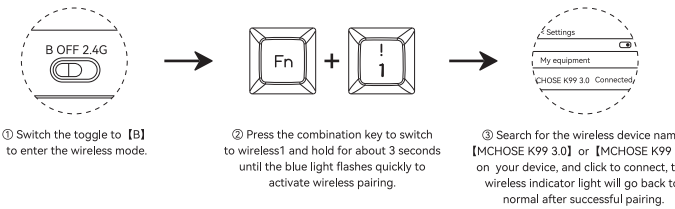
#### · 2.4GHZ CONNECTION



Manual pairing dongle: Switch the toggle to the position **[2.4G]** to enter 2.4GHz mode. Press **[FN+~]** and hold for 3 seconds. The indicator will quickly flash GREEN to enter the pairing mode. Plug the included dongle into the desired device. **[Indicator light]** returns normal when the 2.4GHz wireless mode connect successful.

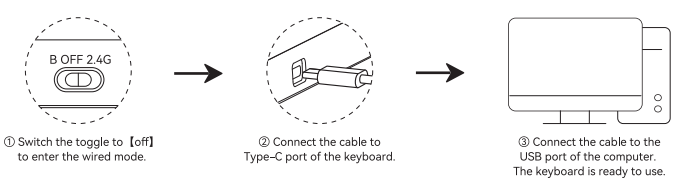
Note: The dongle is default paired.

#### · WIRELESS CONNECTION



- The wireless device names for channels 1, 2, and 3 are **[MCHOSE K99 3.0]** or **[MCHOSE K99 5.0]** .
- The combination key of wireless channel 2 is **[FN+2 @]** , **[Indicator light is purple]** .
- The combination key of wireless channel 3 is **[FN+3 #]** , **[Indicator light is cyan]** .
- Press the combination key and hold for about 3 seconds until the corresponding wireless channel indicator light flashes quickly, indicating that the keyboard has entered detect pairing or search mode, and can be paired and connected to the device.
- Press the combination key "Fn"+number keys "1", "2", or "3" to switch devices.

#### · WIRED CONNECTION



#### · POWER SAVING MODE

In 2.4GHz wireless mode, the keyboard backlight will turn off after 3 minutes of inactivity. The keyboard 2.4G / Wireless mode will be disconnected after 30 minutes of inactivity. Press any key to activate it.

#### · LIGHTING EFFECT

Press the combination key **[FN+Del]** to switch 16 backlights. In combination with the drive software, the keycap lighting can be customized.

#### · FN KEY COMBINATION FUNCTIONS

	~`	1!	2@	3#	A	S	Del
	2.4GHz pairing (Hold for 3 s)	Wireless device 1	Wireless device 2	Wireless device 3	Win System	Mac System	Switch light mode
	End	\	{ [	} ]	::	" +	Win
Fn +	Switch the side light mode	Switch the side light color	Side light brightness -	Side light brightness +	Side light speed -	Side light speed +	Lock Win
	▲	▼	►	◄	~	Right SHIFT	ESC
	Backlight brightness +	Backlight brightness -	Backlight speed +	Backlight speed -	Switch backlight color	Switch on/off the backlight	(hold for 3 s) Reset
	++	2	8	6	4	Home	
	Switch status indicator color	Status indicator brightness -	Status indicator brightness +	Status indicator speed +	Status indicator speed -	Switch status indicator light effect	

- **FN+ WIN:** Locks or unlocks the Win key. In Windows systems, the indicator light remains lit when the Win key is locked, and the Win key becomes inactive.
- When switched to Mac System from Windows, the functions of the WIN key and Left ALT key are interchanged. Additionally, F1-F12 keys will function as multimedia keys.
- **FN+1:** Wireless Channel 1. Press briefly to switch channels, press and hold for 3 seconds to enter pairing mode.
- **FN+2:** Wireless Channel 2. Press briefly to switch channels, press and hold for 3 seconds to enter pairing mode.
- **FN+3:** Wireless Channel 3. Press briefly to switch channels, press and hold for 3 seconds to enter pairing mode.

#### · WINDOWS SYSTEM F-ZONE SINGLE PRESS FUNCTION AND FN COMBINATION FUNCTION

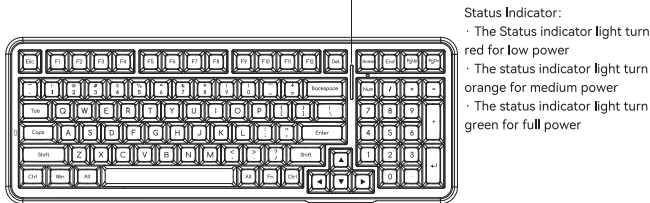
Key	F1	F2	F3	F4	F5	F6
Press the single key	F1	F2	F3	F4	F5	F6
Press with FN combination key	Screen brightness -	Screen brightness +	Switch window	Open the Explorer	N/A	N/A
Key	F7	F8	F9	F10	F11	F12
Press the single key	F7	F8	F9	F10	F11	F12
Press with FN combination key	Previous song	Play / Pause	Next song	Mute	Volume-	Volume+

#### · MAC SYSTEM F-ZONE SINGLE PRESS FUNCTION AND FN COMBINATION FUNCTION

Key	F1	F2	F3	F4	F5	F6
Press the single key	Screen brightness -	Screen brightness +	Switch window	Back to desktop	N/A	N/A
Press with FN combination key	F1	F2	F3	F4	F5	F6
Key	F7	F8	F9	F10	F11	F12
Press the single key	Previous song	Play / Pause	Next song	Mute	Volume-	Volume+
Press with FN combination key	F7	F8	F9	F10	F11	F12

\* When switched to Mac System from Windows, the functions of the WIN key and Left ALT key are interchanged.

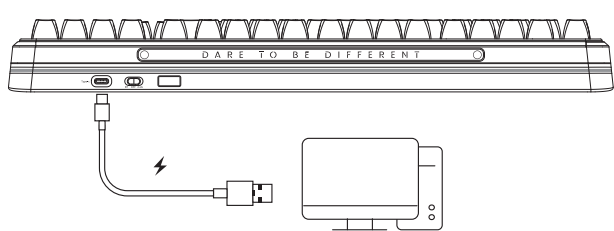
#### · POWER DISPLAY



- Status Indicator:
- The Status indicator light turn red for low power
  - The status indicator light turn orange for medium power
  - The status indicator light turn green for full power

In 2.4G/ wireless mode and the device has been connected, **[Status Indicator]** stays on light, the status indicator light will show 3 different colors according to the power level, 1~2 grid of bright red equals low power capacity, 3~4 grid of bright orange equals] medium power, 5~6 grid of bright green equals high power capacity. (Note: Battery level cannot be detected when connecting the USB cable)

#### · CHARGING INSTRUCTION



By connecting the keyboard to the computer with the provided USB cable, the keyboard will charge. During the charging process, the status indicator light will flow from up to down. Once fully charged, the status indicator light will turn into normal light effect. When the status indicator light flash red, please charge the keyboard in time.

#### · SPECIFICATIONS

Model: K99  
Connectivity: Wireless/2.4GHz/Wired  
Charging interface: Type-C  
Battery capacity: 6000mAh rechargeable lithium battery  
Charging voltage/current: DC 5V === 1A

#### ⚠ CHARGING INSTRUCTION ⚡

- 1.Suggest charging only by connecting the keyboard to the computer with the provided USB cable;
- 2.Don't charging the keyboard by using a fast charger of mobile phone.
- 3.Don't charging the keyboard by substandard or non-compliant power adapters.
- 4.Don't charging the keyboard by over-voltage or over-current power adapters.
- 5.While charging, please keep away from high-temperature devices.
- 6.Pleas turn off the power when you are not use for long time.

The above instructions apply to the other devices with charging functions (Keyboards, mice, headphones, speakers, etc.)

NOTE: This equipment has been tested and found to comply with the limits for a Class B digital device, pursuant to part 15 of the FCC Rules. These limits are designed to provide reasonable protection against harmful interference in a residential installation. This equipment generates, uses and can radiate radio frequency energy and, if not installed and used in accordance with the instructions, may cause harmful interference to radio communications. However, there is no guarantee that interference **will** not occur in a particular installation. If this equipment does cause harmful interference to radio or television reception, which can be determined by turning the equipment off and on, the user is encouraged to try to correct the interference by one or more of the following measures:

- Reorient or relocate the receiving antenna.
- Increase the separation between the equipment and receiver.
- Connect the equipment into an outlet on a circuit different from that to which the receiver is connected.
- Consult the dealer or an experienced radio/TV technician for help.

Changes or modifications not expressly approved by the party responsible for compliance could void the user's authority to operate the equipment.

This device complies with Part 15 of the FCC Rules. Operation is subject to the following two conditions:

(1) this device may not cause harmful interference, and (2) this device must accept any interference received, including interference that may cause undesired operation.

## WARRANTY CARD

Thank you for purchasing our company's products. If there are any quality issues with the products during the warranty period, please contact us. Please provide this warranty card when contacting us so that we can provide you with comprehensive after-sales service.

Product Items: \_\_\_\_\_ Customer Name: \_\_\_\_\_

Serial NO. : \_\_\_\_\_ Warranty Address: \_\_\_\_\_

Purchase Date: \_\_\_\_\_ Warranty Contact: \_\_\_\_\_

Purchase Channel: \_\_\_\_\_ TEL / E-mail: \_\_\_\_\_

Sales: \_\_\_\_\_ Postal Code: \_\_\_\_\_

